

NEMA Style Door Mounted Disconnect Switches

File D10



www.SquareD.com

For the most up-to-date information

The D10 disconnect switch features high I²T rating, longer contact life, visible contact indication, fuse-mounting flexibility, dead-front construction, and auxiliary interlocks.

A complete installation includes a D10 disconnect switch, D11 handle operator, and D12 fuse clip kit. The D10 accepts Class H, K, J or R fuses or can be used for non-fusible applications. The D10 disconnect switch is operated by a cast metal handle operator that is lockable in the "OFF" position and defeatable in the "ON" position.

Disconnect Switches (without fuse clips or shorting straps)

600 V—Without Service Entrance Rating

Starter NEMA Type Size	Switch Rating Amperes	Max. Horsepower Rating ▲				Catalog Number	Price
		120 V	200–240 V	480 V	600 V		
0–1	30	5	10	20	25	D10S1	\$135.00
2	60	10	20	40	50	D10S2	146.00
3	100	15	30	60	75	D10S3	226.00
4	200	25	50	100	100	D10S4	430.00

600 V—With Service Entrance Rating

Starter NEMA Type Size	Switch Rating Amperes	Max. Horsepower Rating ▲				Catalog Number	Price
		120 V	200–240 V	480 V	600 V		
0–1	30	5	10	20	25	D10S1H	\$160.00
2	60	10	20	40	50	D10S2H	176.00
3	100	15	30	60	75	D10S3H	272.00
4	200	25	50	100	100	D10S4H	577.00

▲ Non-fused ratings

Rotary Handle Operating Mechanism & Shaft

Rotary Handle Operator Kits—Door Mounting NEMA Type 1, 3, 3R, 4, 12			For MC Switches	
Description	Amp Rating	Enclosure Interior Depth—Inches	Catalog Number	Price
Variable Depth Rotary Operator	30, 60, 100, 200	5 ⁵ / ₈ –6	D11SF4	\$53.00
		6–10	D11SF10	59.00
		10–16	D11SF16	65.00
Shaft only	30, 60, 100, 200	6	D11SH10	13.10
		12	D11SH16	16.40

Auxiliary Electrical Interlock

(for mounting on 30 A—200 A disconnect switch■)

Block Description (With Switch Contacts Open)	Catalog Number	Price
1 Normally Open	D11N0	\$39.30
1 Normally Closed	D11NC	39.30
1 Normally Open and 1 Normally Closed	D11N0C	58.00
2 Normally Open	D11N00	58.00
2 Normally Open and 2 Normally Closed	D11N0C2	65.00

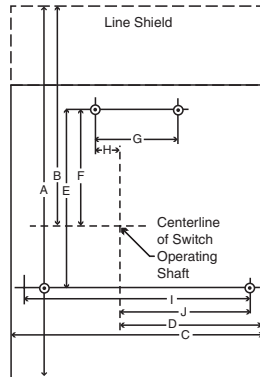
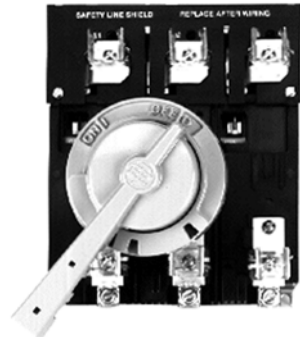
■ One block per switch.

Switch Dimensions (in inches)

Switch Size	Length		Width	Mounting Hole Dimensions								Depth	
	A	B		C	D	E	F	G	H	I	J	K	I*
30	7 ⁵ / ₁₆	4 ¹⁵ / ₃₂	5 ⁷ / ₈	3 ¹⁵ / ₃₂	6	3 ¹⁵ / ₃₂	1 ⁷ / ₈	1 ³ / ₃₂	5 ⁷ / ₁₆	3 ¹ / ₄	4 ³ / ₃₂	4 ¹¹ / ₃₂	
60	7 ⁵ / ₁₆	4 ¹⁵ / ₃₂	5 ⁷ / ₈	3 ¹⁵ / ₃₂	6	3 ¹⁵ / ₃₂	1 ⁷ / ₈	1 ³ / ₃₂	5 ⁷ / ₁₆	3 ¹ / ₄	4 ¹¹ / ₃₂	4 ¹¹ / ₃₂	
100	9 ²⁷ / ₃₂	5 ¹¹ / ₃₂	8 ³ / ₁₆	4 ⁵ / ₈	5 ¹³ / ₁₆	3 ¹³ / ₁₆	2 ¹¹ / ₁₆	5 ¹ / ₆₄	7 ⁵ / ₁₆	4 ³ / ₁₆	5 ²³ / ₃₂	4 ²⁷ / ₃₂	
200	12 ³ / ₁₆	7 ⁷ / ₃₂	8 ³ / ₁₆	4 ⁵ / ₈	5 ¹³ / ₁₆	3 ¹³ / ₁₆	2 ¹¹ / ₁₆	5 ¹ / ₆₄	7 ⁵ / ₁₆	4 ³ / ₁₆	5 ²³ / ₃₂	4 ²⁷ / ₃₂	

◆ Maximum depth with largest fuse.

* Depth including insulating barrier on service entrance switches.



Fuse Clip Kits

D10 Switch Size	Fuse-Clip Rating ▼			Catalog Number	Price
	Amperes	AC Volts	Type		
30 A	No Fuse			D12CO1	\$ 3.30
	0–30	250	H, K	D12C21	6.50
			R	D12CR21	26.20
		600	H, K	D12C61	9.80
			R	D12CR61	26.20
		600	J	D12CJ1	19.70
			31–60	250	H, K
	H, K	D12C62			19.70
	600	R		D12CR62	32.80
		J		D12CJ2	23.00
	600	H, K		D12C23	26.20
		J, K			
60 A	No Fuse			D12D02	9.80
	0–30	250	R	D12DR21	26.20
			H, K	D12D61	9.80
		600	R	D12DR61	26.20
	31–60	250	H, K	D12D22	9.80
			R	D12DR22	32.80
		600	H, K	D12D62	16.40
			R	D12DR62	32.80
		600	J	D12DJ2	23.00
			61–100	250	H, K
	H, K	D12D63Δ			45.90
	600	J		D12DJ3	42.50
R		D12DR63		45.50	
No Fuse				D12E03	19.70
100 A	31–60	250		H, K	D12E22
			H, K	D12E62	16.40
		600	H, K	D12E23	32.80
	R		D12ER23	45.90	
	61–100	250	H, K	D12F63	36.00
			R	D12FR63	45.90
		600	J	D12EJ3	45.90
	101–200	250	H, K	D12F24	42.50
			H, K	D12F64	49.20
		600	J	D12FJ4	56.00
			H, K	D12F25Δ	76.00
		600	H, K	D12FJ5Δ	92.00
No Fuse			D12F04	32.90	
200 A	61–100	600	H, K	D12F63	36.00
			H, K	D12F24	42.60
		250	R	D12FR24	56.00
	101–200	600	H, K	D12F64	49.20
			R	D12FR64	56.00
		600	J	D12FJ4	56.00
	201–400	250	H, K	D12F25Δ	76.00
			H, K	D12FR25Δ	92.00
		600	H, K	D12F65Δ	76.00
			R	D12FR65Δ	92.00
		600	J	D12FJ5Δ	92.00

▼ Continuous current should not exceed switch rating (size). Fuse clip kits should be sized to accommodate inrush.

Δ Cannot be used with service entrance rated switch.

MC Switch Interrupting and Withstandability Ratings

Switch Rating Amperes	Interrupting Rating Amperes Symmetrical 600 Vac, 30	Withstandability I ² T (Amperes ² seconds)
30	1,200	.38 x 10 ⁶
60	1,800	1.28 x 10 ⁶
100	2,000	2.62 x 10 ⁶
200	3,600	5.25 x 10 ⁶

Note: These switches are for motor circuit applications.

Lug Data

Switch Rating	Number Per Pole	Wire Range □	Wire Type
30	1	#14–#8	Cu
60		#14–#4	Cu
100		#14–#1/0	Al–Cu
200		#6–250 kcmil	Al–Cu

□ One conductor per lug.

For additional information, reference Catalog #9420CT9701.

