



AMC 1220 SERIES MULTI DROP GAS SENSOR MODULE



For gas monitoring applications requiring a large number of sensors, installation costs represent a significant share of total project expenses. In an effort to lower these costs, AMC developed the AMC 1220 Series multi drop gas sensor module. Compatible with the AMC 1022D Series, sensors can be wired in series utilizing low power, three wire cabling. Dual wiring inputs combined with multi zone capabilities, permit an unlimited range of configurations, thereby minimizing both installation time and materials.

*** Note:** This system is for use in non-hazardous locations.

Up to eight AMC 1220s of different sensor types can be connected to a single 1022D zone with a maximum of 150ft between sensors and panel. Power supplies can be upgraded allowing more sensors per zone. Local indications for low and high alarm, as well as, power and sensor failure make the AMC 1220 an economical solution to your gas monitoring needs.

	AMC 1225	AMC 1228-28	AMC 1228-20
Detectable gas:	Combustible gas*	Nitrogen dioxide	Carbon monoxide
Sensor type:	Solid state	Electrochemical cell	Electrochemical cell
Range:	0-50% L.E.L	0-10 PPM	0-100 PPM
Sensor warranty:	Two years	One year	Three years
Enclosure:	PVC		
Installation wiring:	Three wire 18 awg shielded		
Dimensions:	10.2 cm H x 10.2 cm W x 6 cm D (4" W x 4" H x 2.25" D)		
Operating temperature:	0°C to 40°C		
Operating humidity:	0-99% non-condensing		
LED indication:	High alarm - red LED, Low alarm - yellow LED, Power - green LED (on), Fail - green LED (off)		

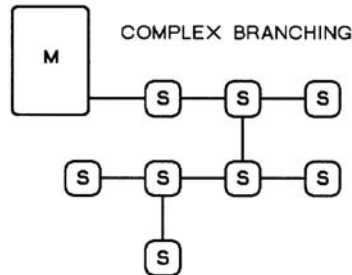
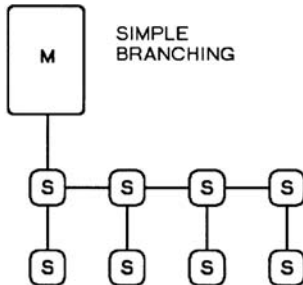
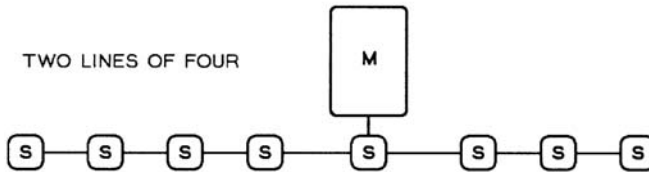
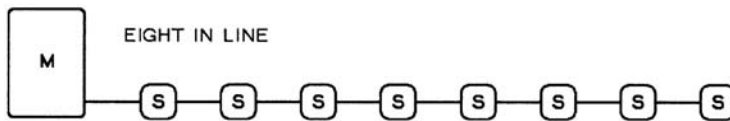
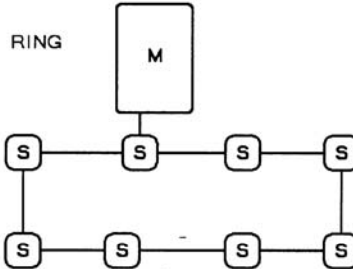


AMC 1220 WIRING DIAGRAM

Note: Only single zone systems shown

TYPICAL SYSTEM CONFIGURATIONS FOR ONE MONITOR AND 8 SENSORS.

LEGEND:
M = MONITOR
S = SENSOR MODULE



For more information:

Authorized Distributor

Warranty: All Armstrong equipment is warranted against defects in materials and workmanship for two years from date of delivery, except sensors. Please contact factory for sensor warranty. During the warranty period, we will repair or replace components that prove, in our opinion, to be defective. We are not liable for auxiliary interfaced equipment, or consequential damage. All warranty items must be returned by prepaid freight.

Note: Due to ongoing product development, the manufacturer reserves the right to change specifications without prior notice. The information contained herein is based on data considered accurate. However, no warranty is expressed or implied regarding the accuracy of this data.