

"BA-475B"

1/4" - 3"

BRASS BALL VALVE
TWO-PIECE, FULL-PORT
600 WOG / 150 SWP
THREADED ENDS*

MSS-SP110
ASME A112.4.14
FED. SPEC.
WW-V-35C, II, BZ, 3, C

SA
 C US
 ANSI Z 21.15a-2001, CGA 9.1a-2001
 ASME B16.44-2002, CR91-002-1992

UL US
 UL 125
 UL 842

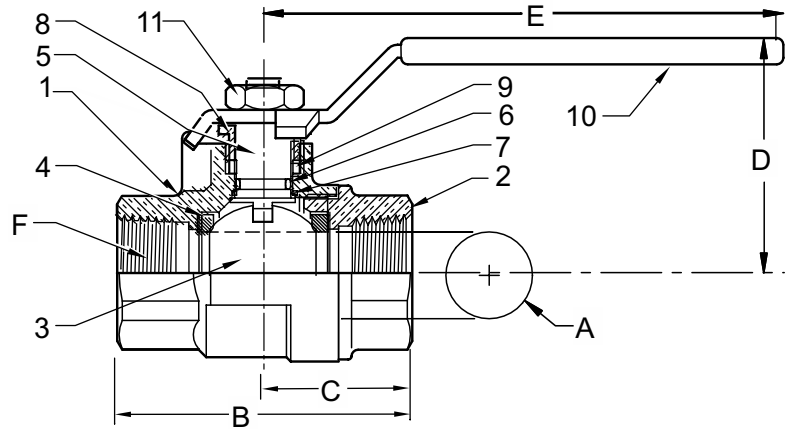
FM
 APPROVED
 1140

1/4" through 2" Only

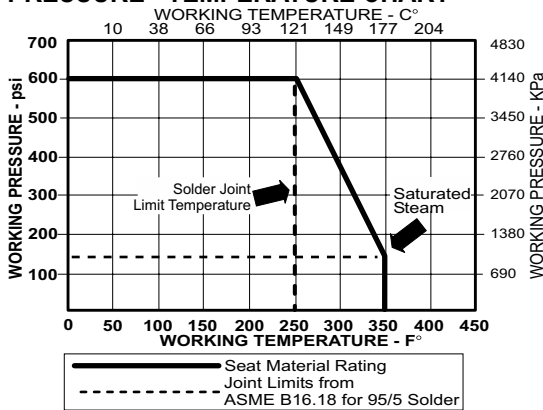
MATERIALS LIST

ITEM	PART	MATERIALS	ASTM SPEC.
1	Body	Brass, Forged	B283
2	Tailpiece	Brass, Forged	B283
3	Ball	Brass w/Chrome Plating	B584
4	Ball Seal	PTFE	Commercial
5	Stem	Brass	B16
6	O-Ring	Buna-N	D2006
7	ThrustWasher	PTFE	Commercial
8	Gland Nut	Brass	B16
9	Packing	PTFE	Commercial
10	Handle	Zinc Plated Steel	B633
11	Handle Nut	Zinc Plated Steel	B633

* Also Available BA-475B-LL
 (Locks Only In Closed Position)



PRESSURE - TEMPERATURE CHART



VACUUM SERVICE TO 29 INCHES Hg

DIMENSIONS

Valve Size	UNITS	1/4"	3/8"	1/2"	3/4"	1"	1-1/4"	1-1/2"	2"	2-1/2"	3"
A	INCHES	.39	.39	.51	.76	1.00	1.26	1.50	2.00	2.48	2.95
	mm	9.9	9.9	12.7	19.3	25.0	32.0	38.1	51.0	63	74.9
B	INCHES	1.87	1.87	2.25	2.62	3.06	3.5	3.75	4.38	5.16	6
	mm	47	47	57	67	78	89	95	111	131.1	152.4
C	INCHES	0.95	0.95	1.12	1.31	1.91	2.21	1.87	2.19	2.58	3
	mm	24	24	61	33	49	56	47	56	65.5	76.2
D	INCHES	1.42	1.42	1.46	1.93	2.10	2.33	2.52	2.96	3.94	4.37
	mm	36	36	37	49	53	59	64	75	100.1	111
E	INCHES	3.14	3.14	3.14	4.35	4.35	5.00	5.00	6.90	7.87	7.87
	mm	80	80	80	110	110	127	127	175	199.9	199.9
F	THREAD SIZE	1/4" NPT	3/8" NPT	1/2" NPT	3/4" NPT	1" NPT	1-1/4" NPT	1-1/2" NPT	2" NPT	2-1/2" NPT	3" NPT
Cv		12	12	18	40	72	112	161	287	448	645
TORQUE	in-lb	16	16	19	58	69	89	124	210	445	563
	N.m	1.8	1.8	2.1	6.5	7.8	10	14	24		
WEIGHT	lbs	0.33	0.34	0.47	0.89	1.24	1.66	2.34	4.94	7.4	10.47
	Kg	.149	.155	.213	.403	.565	.755	1.064	2.245	3.35	4.75

Rev. 18

The information presented on this sheet is correct at the time of publication. Milwaukee Valve reserves the right to change design, and/or material specifications without notice. For the most current information access www.milwaukeevalve.com

